

Analysing simple electric motors in the classroom

Jeff Yap¹ and Dan MacIsaac²

¹ Department of Physics, SUNY–Buffalo State College, 1300 Elmwood Ave, Buffalo, NY 14222, USA

² Department of Physics, SUNY–Buffalo State College, 1300 Elmwood Ave, SC222, Buffalo, NY 14222, USA

E-mail: jeff yap@adelphia.net and macisadl@buffalostate.edu



Abstract

Electromagnetic phenomena and devices such as motors are typically unfamiliar to both teachers and students. To better visualize and illustrate the abstract concepts (such as magnetic fields) underlying electricity and magnetism, we suggest that students construct and analyse the operation of a simply constructed Johnson electric motor. In this article, we describe a classroom activity that elicits student analysis to aid the comprehension and retention of electromagnetic interactions.

We describe the construction and the conceptual and introductory level mathematical analysis of a simple handmade electric motor. Constructing and analysing a simple motor provides students with a fun and interesting hands-on experience that helps make concrete complex abstract ideas like the magnetic field due to loops and coils, the magnetic field due to a permanent magnet, flux, torque, back EMF and so forth [1–5].

Materials for this activity are available from various vendors. The ceramic magnets shown are part number CB60 from Master Magnetics (www.magnetsource.com). Motor wire is widely available, and should be approximately 14–16 gauge, enamel coated, solid copper wire. Inexpensive wire may also be available (in shorter lengths) from a local motor winding factory. Standard D-cell batteries and large paperclips are also necessary for this activity. D-cell batteries are capable of supplying 5–8 A of current during a short circuit, so please be careful.

To construct a Johnson [6] motor, wrap insulated wire around a D-cell battery to form a coil, extend the two wire ends outward from

the loop for armatures, and selectively remove the insulation from the armatures. Current runs through the coil from paperclips connecting the two poles of the D-cell battery to the armatures, and a magnet stuck to the side of the battery supplies a fixed magnetic field. To expedite the activity, these coils can be pre-wrapped and prepared by a teacher or student assistant. There



Figure 1. The assembled motor apparatus.

Questions and solutions

Q1. My motor armature had a resistance of $0.015\ \Omega$. Assuming the $1.5\ \text{V}$ battery could drive a constant current through this coil at rest, what would the current be?

$$I = \frac{V}{R} = \frac{1.5\ \text{V}}{0.015\ \Omega} = 100\ \text{A}$$

Q2. An actual measured current flow through the coil is about $5\ \text{A}$. What magnetic field does this produce in an ideal coil? Draw the direction of this field in a diagram showing the coil.

$$B = N\mu_0 I / 2r$$

For coils used in this experiment:

$$N = 10, \mu_0 = 4\pi \times 10^{-7}\ \text{N A}^{-2}, I = 5\ \text{A}, r \approx 0.0175\ \text{m}$$

$$B \approx \frac{10 \times 4\pi \times 10^{-7} \times 5}{2 \times 0.0175} \approx 2 \times 10^{-4}\ \text{T}$$

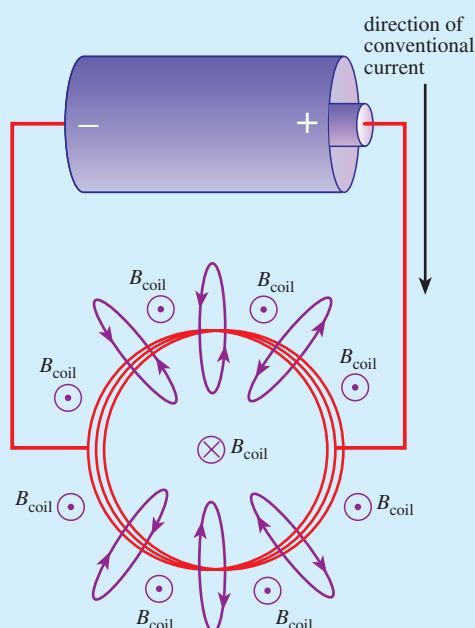


Figure 2. Magnetic field produced by a current-carrying coil.

Q3. Why is the permanent magnet stuck to the D cell needed in our motor?

The permanent magnet provides an external field for the field produced by the coil to oppose. It is the interaction of the two fields that exerts a torque on the coil.

is a certain level of difficulty in winding multiple armatures. Perfect symmetry and weight balance are not essential, but the armature needs to be fairly balanced to function. While it is rewarding to see misshapen armatures spin, it requires a

certain amount of practice and repetition to be able to create very reliable armatures. However, if students have sufficient time and guidance for building their own armatures, they are able to observe the construction process from start to

Q4. Sketch and describe the magnetic fields in this motor at different points during the rotation.

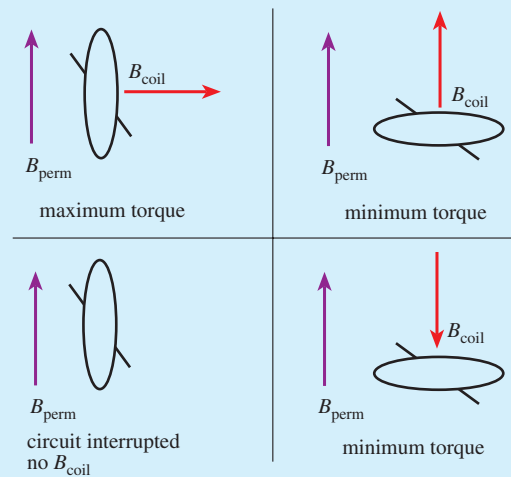


Figure 3. Magnetic field and resultant torques.

Q5. View the motor in the dark. What do you see at the paperclip/armature connections? Why?

It is possible to see a small arc between the paperclip and armature. This is evidence that current is flowing through the coil.

Q6. An engineer could claim that this motor should simply lock itself into a single position, and the motor does have a tendency to do so. What is this (electrically powered) position? Why does our motor not continuously lock in this position?

The 'lock' position is when the coil is perpendicular to the field of the permanent magnet such that the two fields are antiparallel. If the current through the coil were constant, any displacement from this position would result in a field interaction creating a torque that would tend to oppose the motion of the coil. These motors do not lock in this position because the enamel insulation is removed from only half of the armature. When the motor reaches this position the current is interrupted and the coil rotates through the second half of its cycle due to its rotational inertia (angular momentum).

Q7. If locked and not rotating, where would the electrical energy from the battery go?

The energy would primarily raise the temperature of the copper coil.

finish, and may find complete construction more educational. Another solution to save time is to pre-fabricate all of the armatures, but manufacture one in front of the class.

The students should be told to leave an interrupter (an area of intact insulation on one or both of the armatures) which will reduce the tendency of the armature to lock up in a specific position [7]. This concept can be addressed later in the class discussion. Once basic armatures are fabricated and observed, variations include

increasing or decreasing the number of loops in the coil, creating a bigger or smaller loop and altering the shape of the coil. The benefit of these changes is to allow the students to make empirical observations, compare the behaviours with the standard motor and begin to figure out how the different variables relate to each other. This is a precursor step to deriving equations based on their knowledge and experience. After initial observations and experiments have been made, a permanent fixture can be constructed or given to

Q8. A second magnet can be brought beneath the coil and can either slow or accelerate the armature's rotation (see below). Explain why, using a diagram.

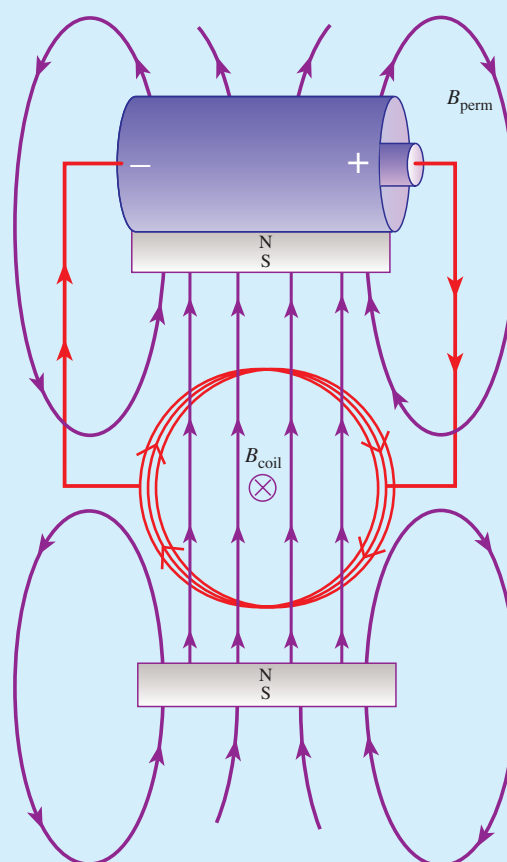


Figure 4. Interaction of induced and permanent magnetic fields. (For scale, the magnetic interaction with the steel battery casing is ignored.)

allow hands-free observations and manipulation.

As a prerequisite activity to the Johnson motor, students should be made familiar with magnetic field lines by having used compasses to map and sketch magnetic fields from permanent magnets. In a similar fashion, students should have mapped magnetic fields created by a current-carrying wire to connect electrical current to magnetism. Using suspended iron filings, a ferro-fluid or several compasses, students will map the area surrounding a wire. A third prerequisite hands-on activity is kinesthetically feeling the forces and resulting torques induced when two magnets are brought close together in various alignments. Following this activity, students should be given the opportunity to disassemble

commercial motors and attempt to explain how they work. This can be used to confirm their understanding [8, 9].

Activities and class procedure can proceed as follows. After the students assemble the motor apparatus (figure 1) they make simple qualitative observations about the motor. If the teacher is intentionally non-specific regarding the orientation of the magnet, the contacts, the battery and the armature, different students will have different orientations, which can lead to later discussion. The students describe the motion of the motor when spinning freely, then manually hold the motor at various positions and describe the force, or 'push', that they feel from the motor. A guiding question from the teacher can prompt

the students to try reversing the magnet, the battery, the armature or any combination of these factors. Students can also try adding additional magnets or batteries in alignment with or against the original set. Each of these modifications will lead to additional qualitative observations that can be documented and used for reference when developing a working model for how and why the motors work.

Advanced students can do further and more in-depth investigation into the technical aspects of the motor. For electrical circuit analysis, the load, amperage and circuitry of the system can be analysed. For a more thorough investigation of Gauss's, Faraday's and Lenz's laws, the back electromagnetic field (magnetic field and/or current generated by the motion of the armature) can be calculated and compared with the actual value. Computerized visualizations of electric and magnetic fields are available from the MIT TEAL studio [10].

The unit can be taught through a whiteboarding discussion [11]. The questions (and solutions) shown in the Box can be freely distributed¹ [12].

Classroom or laboratory analysis of the Johnson motor not only connects the subjects of electricity and magnetism, it will provide real-world applications and contexts for the physics concepts. Taking the mystery out of motors and dynamos will not only improve student understanding but also reduce the apprehension towards technology.

Acknowledgments

This manuscript partially addressed requirements for the PHY690: Masters' Project at SUNY–Buffalo State College.

Received 3 January 2006, in final form 31 March 2006
doi:10.1088/0031-9120/41/5/001

¹ Similar activities are used in the second semester of the Arizona State University Modeling Physics Curriculum.

References

- [1] Wells M, Hestenes D and Swackhamer G 1995 A modeling method for high school physics instruction *Am. J. Phys.* **64** 114–9
- [2] Arons A 1997 *Teaching Introductory Physics* (New York: John Wiley)
- [3] Hake R 1998 Interactive-engagement vs. traditional methods: A six-thousand-student survey of mechanics test data for introductory physics courses *Am. J. Phys.* **66** 64–74
- [4] Piaget J and Garcia R 1989 *Psychogenesis and the History of Science* (New York: Cambridge University Press)
- [5] Chiaverina C 2004 The simplest motor? *Phys. Teacher* **42** 553
- [6] Johnson D 1997 The Johnson D.C. electric motor recipe *J. College Sci. Teachers* **26** 437–8
- [7] Klittnick A and Rickard M 2001 Mystery motor demystified *Phys. Teacher* **39** 174–5
- [8] Dindorf W 2002 Unconventional dynamo *Phys. Teacher* **40** 220–1
- [9] Johnson J and Miller F 1976 A motor is a generator and vice versa *Phys. Teacher* **14** 36–7
- [10] Massachusetts Institute of Technology TEAL (Technology Enabled Active Learning) Studio Physics project: ocw.mit.edu
- [11] MacIsaac D and Falconer K 2004 Whiteboarding in the classroom (in preparation)
- [12] MacIsaac D 2003 Small motors: Faraday's law and Lenz's law. Retrieved 28 April 2003 from Physics Education at Buffalo State College: physicsed.buffalostate.edu/SeatExpts/EandM/motor/index.htm

